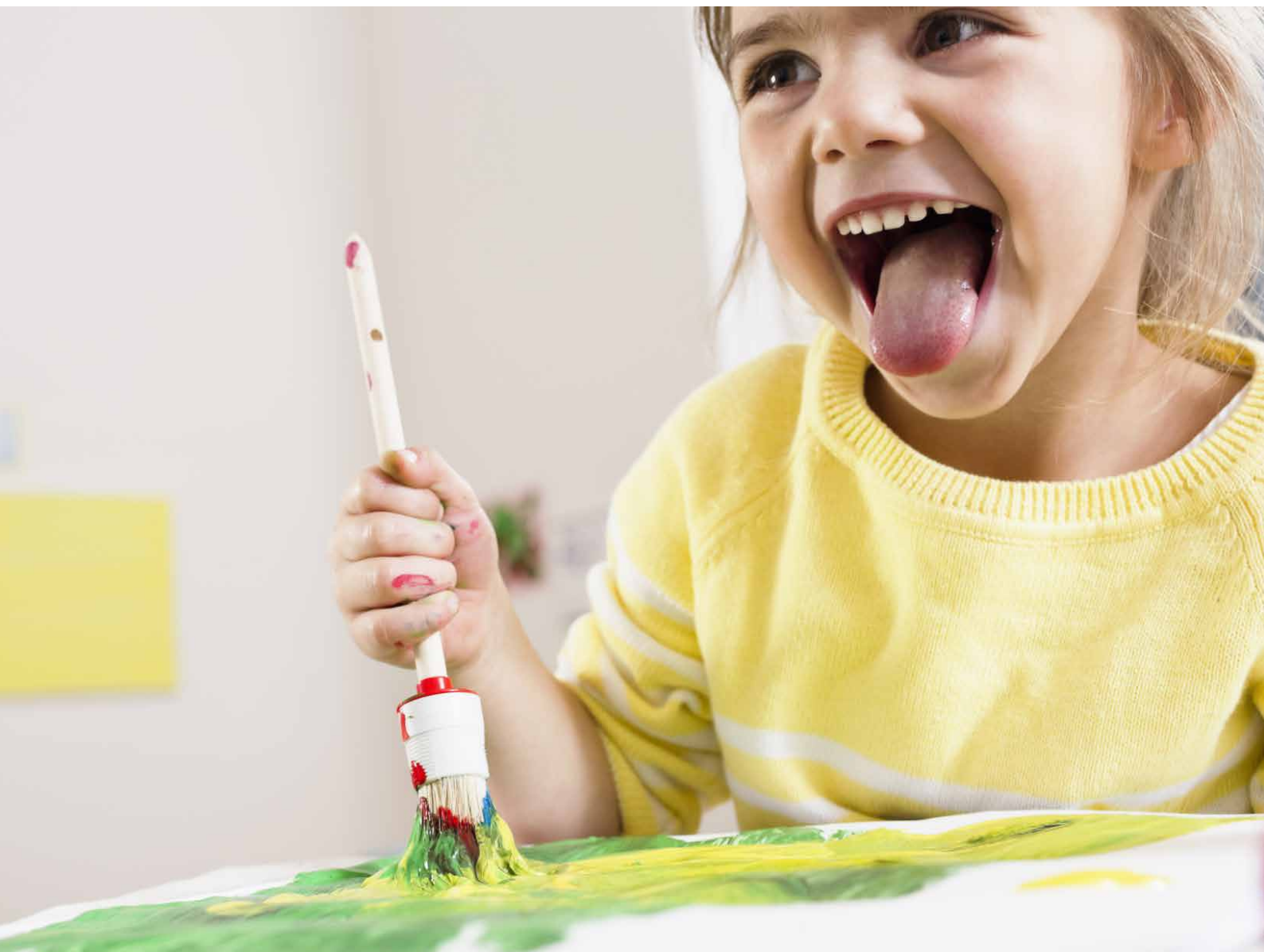


Colour lounge

The colour and material collections



Work surfaces

AP01



AP01-01
25 mm work surface
melamine coated
off-white, 3 mm PP
edge off-white



AP01-02
25 mm work surface
melamine coated
off-white, 8 mm PUR
edge light grey



AP01-03
25 mm work surface
0.8 mm HPL coated
off-white, 3 mm PP
edge off-white



AP01-04
25 mm work surface
0.8 mm HPL coated
off-white, 8 mm PUR
edge light grey



AP01-05
25 mm work surface
melamine coated oak,
3 mm PP edge oak



AP01-06
25 mm work surface
melamine coated oak,
8 mm PUR edge beige



AP01-07
25 mm work surface
0.8 mm HPL coated oak,
3 mm PP edge oak



AP01-08
25 mm work surface
0.8 mm HPL coated oak,
8 mm PUR edge beige



AP01-09
10 mm work surface
Solid core white,
bevelled edge black

AP02



AP02-01
30 mm work surface
0.8 mm HPL coated
off-white, 3 mm PP
edge off-white



AP02-02
30 mm work surface
0.8 mm HPL coated
off-white, 8 mm PUR
edge light grey



AP02-03
30 mm work surface
Ceradur white, 7 mm
PUR beaded edge
light grey



AP02-04
30 mm work surface
Tile white, 7 mm
beaded edge



AP02-07
26 mm work surface
Stoneware light grey,
7 mm beaded edge



AP02-06
30 mm work surface
polypropylene light
grey,
7 mm beaded edge



AP02-05
19 mm work surface
Solid core white,
bevelled edge black

Melamine resin coating

Critical substances	Acids in concentrations > 10 %
Destructive substances	Concentrated muriatic acids, nitric acid, heated sulphuric acid
Advantage	Flat
Limitation	Moisture-sensitive joints Average chemical resistance
Use	Rolling, add-on, window work tables Tables in dry areas Cannot be use in damp or wet areas

Solid core

Critical substances	Acids in concentrations > 10 %
Destructive substances	Concentrated muriatic acids, nitric acid, heated sulphuric acid
Advantage	Moisture-resistant, flat
Limitation	Low coating thickness
Use	Damp room Physical laboratories Tables with medium stressing

Ceradur

Critical substances	none
Destructive substances	Hydrofluoric acid
Advantage	Flat, lighter than stoneware, best chemical resistance
Limitation	Thermodynamic stressing limited
Use	Areas with greatest chemical stress

Stoneware

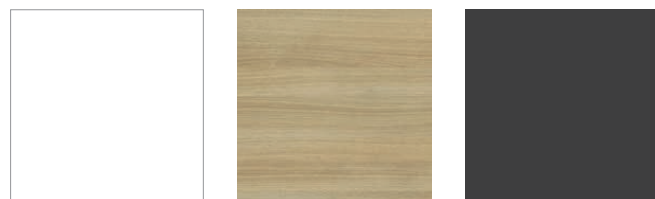
Critical substances	none
Destructive substances	Hydrofluoric acid
Advantage	Best chemical resistance, mechanically stable
Limitation	Flatness tolerances due to burning process, thermodynamic stressing limited
Use	Areas with greatest chemical and mechanical stressing

Polypropylene

Critical substances	Hydrocarbon, citric acid, oxalic acid, carbon tetrachloride, diesel oil
Destructive substances	Ozone, concentrated nitric acid, chloroform, petrol, benzene
Advantage	Smooth, flat, light, high chemical resistance to acids and many solvents, lower glass breakage
Limitation	Soft, scratch-sensitive surface, heat-sensitive
Use	Areas with high chemical resistance Working with hydrofluoric acid Radionuclide area Areas, in which the lack of joints is important

Wood decors

HD01



HD01-01 White
HD01-42 Oak effect
HD01-08 Anthracite

HD21



HD21-01 White
HD21-04 Light grey
HD21-05 Medium grey
HD21-08 Anthracite
HD21-40 Maple
HD21-41 Beech



HD21-42 Oak
HD21-43 Walnut
HD21-21 Orange
HD21-22 Cherry red
HD21-23 Apple green
HD21-25 Blue

HD22



HD22-01 White
HD22-03 Light grey
HD22-42 Oak

HD23



HD23-01 White
HD23-08 Anthracite
HD23-04 Light grey
HD23-22 Red
HD23-23 Apple green

Metallic colours

ME01

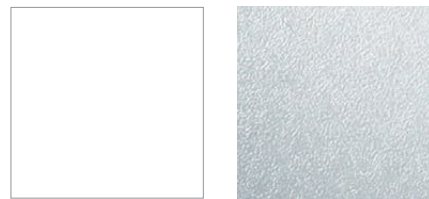


ME01-01 White RAL 9010
 ME01-15 White aluminium RAL 9006
 ME01-27 Blackberry RAL 4007
 ME01-26 Fuchsia
 ME01-08 Anthracite RAL 7016
 ME01-03 Light grey RAL 7035



ME01-25 Ocean blue similar RAL 5015
 ME01-24 Blueberry blue similar RAL 5013
 ME01-21 Orange similar RAL 2000
 ME01-22 Cherry red RAL 3002
 ME01-23 Apple green

ME21



ME21-01 White RAL 9010
 ME21-15 White aluminium RAL 9006

ME22



ME22-01 White RAL 9016
 ME22-03 Light grey RAL 7035
 ME22-15 White aluminium RAL 9006
 ME22-08 Anthracite RAL 7016
 ME22-21 Orange RAL 2003
 ME22-22 Ruby red RAL 3000



ME22-23 Apple green
 ME22-24 Gentian blue RAL 5010

Plastic colours

KU01



KU01-04 Light grey
 KU01-25 Ocean blue
 KU01-08 Anthracite
 KU01-21 Orange
 KU01-22 Cherry red
 KU01-23 Apple green

KU21

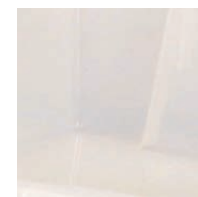


KU21-22 Red
 KU21-24 Blue
 KU21-23 Apple green
 KU21-28 Sand
 KU21-04 Light grey
 KU21-09 Black

KU22



KU22-20 Yellow
 KU22-22 Red
 KU22-23 Apple green
 KU22-24 Ultramarine
 KU22-03 Light grey
 KU22-08 Anthracite



KU22-19 Translucent

Stained colours

BE01

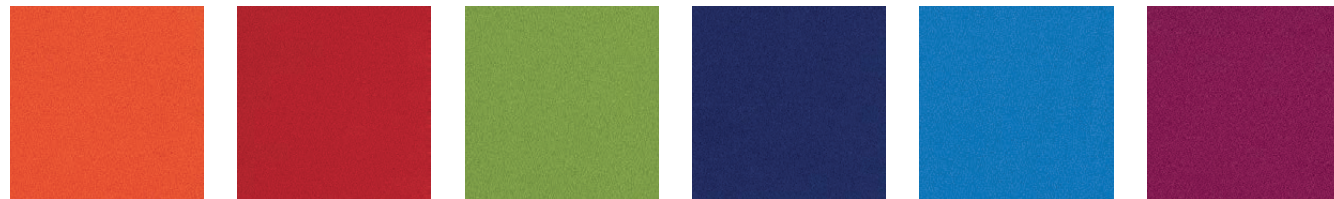


BE01-41 Beech
 BE01-22 Cherry red
 BE01-21 Orange
 BE01-25 Ocean blue
 BE01-23 Apple green
 BE01-09 Black

Upholstery fabrics

ST01 – Pur

100% Trevira CS polyester, fire protection class B1, 60,000 friction cycles, light-fastness 6, weight 310 g/m²



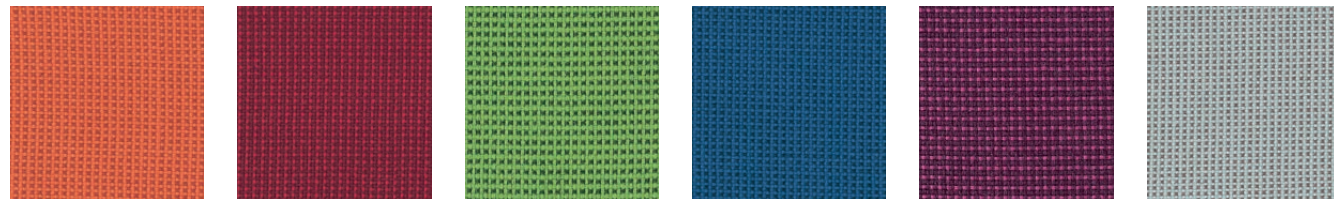
ST01-21 Orange
 ST01-22 Cherry red
 ST01-23 Apple green
 ST01-24 Blueberry blue
 ST01-25 Ocean blue
 ST01-26 Fuchsia



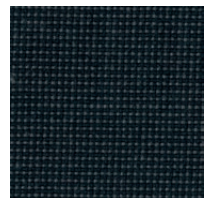
ST01-27 Blackberry
 ST01-04 Light grey
 ST01-09 Black

ST02 – Square

100% polypropylene, fire protection class B1, light-fastness 6, weight 250 g/m²



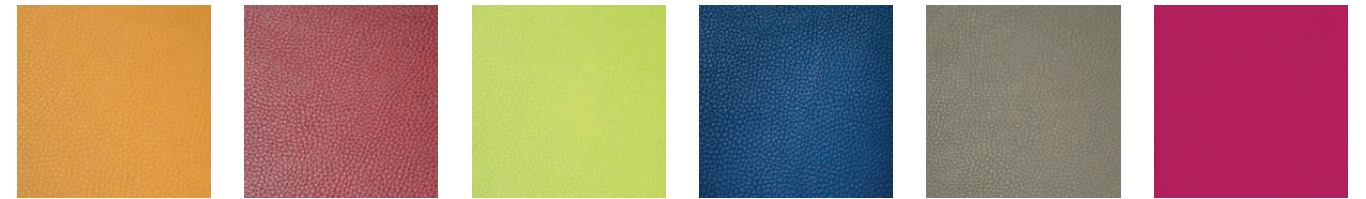
ST02-21 Orange
 ST02-22 Cherry red
 ST02-23 Apple green
 ST02-24 Blueberry blue
 ST02-27 Blackberry
 ST02-04 Light grey



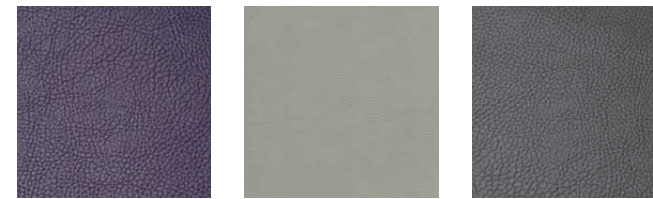
ST02-08 Anthracite

ST03 – Artificial leather

Robust artificial leather with leather grain, fire protection class B1, 75,000 friction cycles, light-fastness 7, weight 780 g/m²



ST03-21 Orange
 ST03-22 Cherry red
 ST03-23 Apple green
 ST03-24 Blueberry blue
 ST03-28 Sand
 ST03-26 Fuchsia



ST03-27 Blackberry
 ST03-04 Light grey
 ST03-09 Black

Upholstery fabrics

ST21 – Valencia

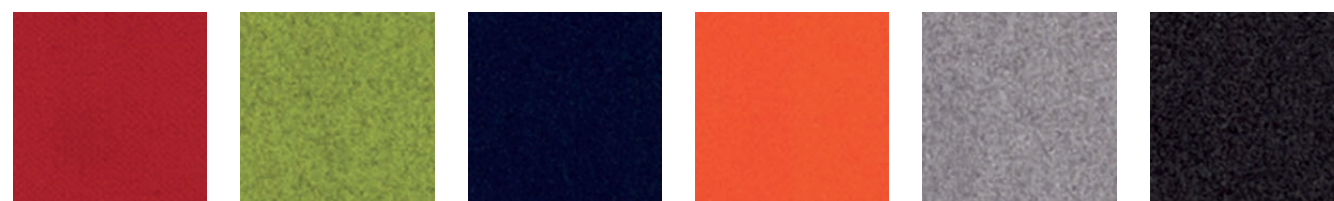
Artificial leather, front: 100% vinyl, back: 100% polyester, 300,000 friction cycles



ST21-22 Red ST21-23 Apple green ST21-24 Blue ST21-21 Orange ST21-05 Grey ST21-09 Black

ST22 – Felt

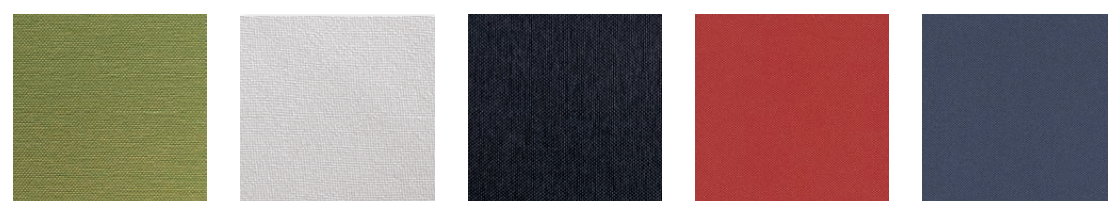
Felt, 70% wool, 25% polyamide, 3% acrylic, 2% polyester, 90,000 friction cycles



ST22-22 Red ST22-23 Apple green ST22-24 Dark blue ST22-21 Orange ST22-04 Light grey ST22-08 Anthracite

ST23 – Tempo

100% vinyl, reverse side 100% polyester, 100,000 friction cycles, indoors and outdoors



ST23-23 Green ST23-04 Light grey ST23-08 Anthracite ST23-22 Red ST23-24 Blue

ST30 – Laxx

Polyester, stain-resistant, durable

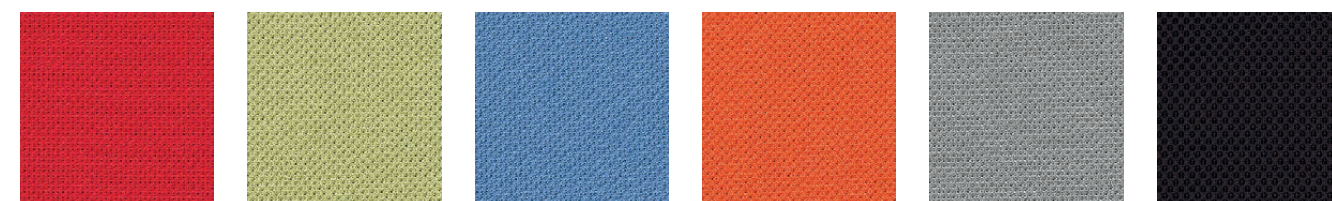


ST30-22 Red ST30-23 Apple green ST30-24 Blue ST30-25 Ocean blue ST30-21 Orange ST30-26 Fuchsia



ST30-27 Blackberry ST30-09 Black

ST31 – Econ



ST31-22 Cherry red ST31-23 Apple green ST31-25 Ocean blue ST31-21 Orange ST31-04 Light grey ST31-09 Black

ST32 – Knitted fabric

Oeko-Tex 100 Standard, light-fast, resistant to abrasion



ST32-22 Red ST32-23 Apple green ST32-24 Blue ST32-21 Orange ST32-05 Grey ST32-09 Black

Boards and pin boards

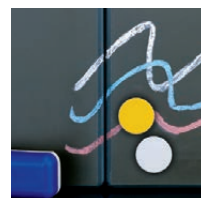
TA01 – Surfaces



TA01-01
Enamelled steel white



TA01-23
Enamelled steel, green



TA01-08
Enamelled steel, anthracite

Info

Enamelled steel white can be written on with felt pens, can be wiped when dry and is magnetic.
Enamelled steel green/anthracite can be written on with chalk, can be wiped when wet/dry and is magnetic.

LI01 – Lines



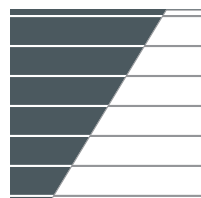
LI01-01
1st school year
4:5:4:2 cm



LI01-02
2nd school year
3:4:3:2 cm



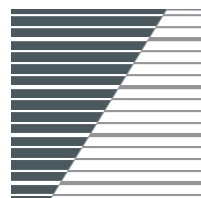
LI01-03
3rd school year
3:5:8 cm



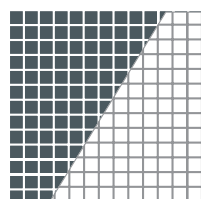
LI01-04
4th school year
10 cm



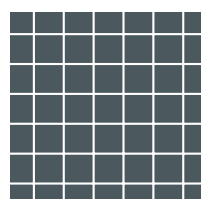
LI01-05
Staves
2.5 cm



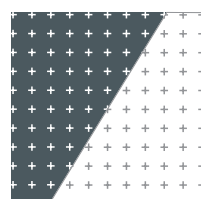
LI01-06
Shorthand lines
4 cm



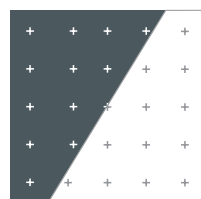
LI01-07
Square 5 x 5 cm



LI01-08
Square 10 x 10 cm



LI01-09
Squares with crosses
5 x 5 cm



LI01-10
Squares with crosses
10 x 10 cm

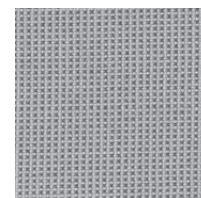
Info

The enamelled steel writing surfaces can be marked with extremely durable lines.

TA02 – Surfaces

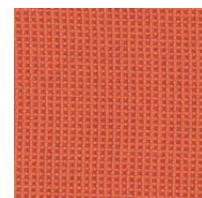


TA02-01
Cork

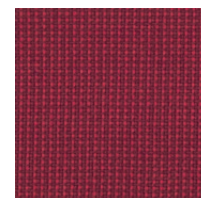


TA02-02
Fabric cover (collection ST02)

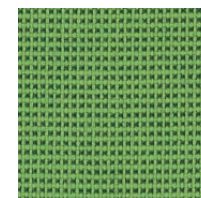
ST02 – Fabric covers



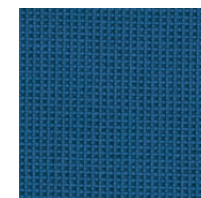
ST02-21
Orange



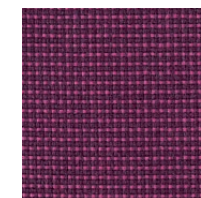
ST02-22
Cherry red



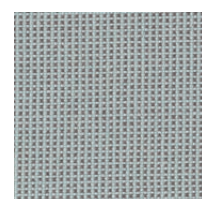
ST02-23
Apple green



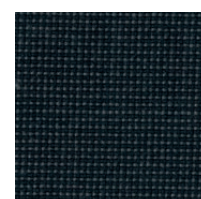
ST02-24
Blueberry blue



ST02-27
Blackberry



ST02-04
Light grey



ST02-08
Anthracite

FI01 – Acoustic felt



FI01-22
Red



FI01-23
Apple green



FI01-08
Anthracite

HOHENLOHER

COLOUR LOUNGE



HOHENLOHER ACADEMY

DIALOG ÖFFNET UNS
DIE SICHT NACH VORNE.

Gemeinsam die Zukunft des Lernraumes gestalten.
Wo Austausch stattfindet, kann Wandel gelebt werden.

HOHENLOHER



Produktprogramm

Schuleinrichtungen

Naturwissenschaftliche
Einrichtungen

Einrichtungen für
Aus- und Weiterbildung

Leistungen

Beratung & Planung

Produktion & Montage

Service & Wartung

HOHENLOHER

Hohenloher Spezialmöbelwerk
Schaffitzel GmbH + Co. KG

Brechdarrweg 22 · 74613 Öhringen
Postfach 1360 · 74603 Öhringen

Tel: +49 (0) 79 41 / 696 - 0
Fax: +49 (0) 79 41 / 696 - 116

info@hohenloher.de
www.hohenloher.de